



Annandale

Fabrics by Jo Morton



makower uk

1384 Broadway
New York, NY 10018
(800) 223-5678

www.andoverfabrics.com

Quilt designed by Candy Hargrove
Machine quilted by Maggi Honeyman
Finished size: 78" x 78"

Annandale

Fabrics by Jo Morton



makower uk®

Fabrics shown are 25% of actual size. Fabrics used in quilt pattern are shown in red.



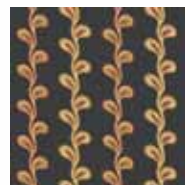
5088-K 5/8 yd



5089-K 1 1/4 yds



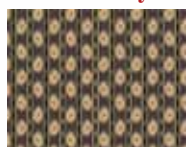
5090-K 1/2 yd



5091-K 2 5/8 yds
(includes binding)



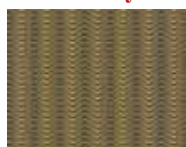
5092-Y Fat 1/8
(extra yardage needed for backing)



5093-RN 1/2 yd



5093-Y* Fat 1/8



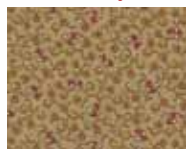
5094-K 1 yd



5096-N* Fat 1/8



5095-R 1/2 yd



5092-N

Attic Shirtings



5082-K Fat 1/8



5082-N Fat 1/8



5083-N Fat 1/8



5084-K Fat 1/8



5084-N Fat 1/8



5086-K Fat 1/8



5087-K Fat 1/8

Toast II



4233-L Fat 1/8



4233-LN Fat 1/8



4241-YN Fat 1/8



4245-LC Fat 1/8

Ravenwood



2474-K 1/2 yd



3997-K 1/2 yd



4880-K 1/2 yd



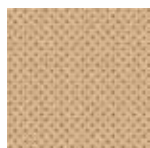
5088-R



5089-G



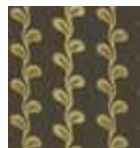
5096-L Fat 1/8



5095-N Fat 1/8



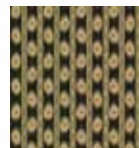
5090-R



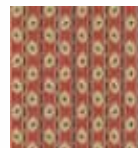
5091-G



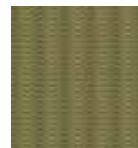
5092-G



5093-K



5093-R



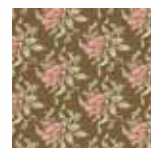
5094-G



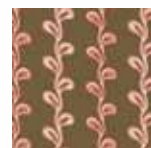
5088-E



5089-E



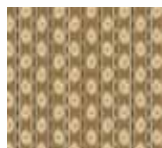
5090-N



5091-N



5092-E



5093-N



5094-E



5095-E



5096-E

Bolts needed to cut project kits				1 bolt of each of the following fabrics will yield 30 kits:		1 bolt of each of the following fabrics will yield 120 kits:		
Annandale	10 kits	20 kits	30 kits	Annandale	Ravenwood	Annandale	Toast II	Attic Shirtings
5091-K	2	4	6	5090-K	2474-K	5092-Y*	4233-LN	5082-N
5094-K	1	2	2	5091-K	3997-K	5093-Y	4233-L	5082-K
5088-K	1	1	2	5093-RN	4880-K	5095-N	4241-YN	5083-N
5089-K	1	2	3	5095-R		5096-L	4245-LC	5084-K
Backing						5096-N		5084-N
5092-Y	4	7	10					5086-K
*Yardage needed for backing (4 7/8 yards or two 82" x WOF lengths per kit)								5087-K